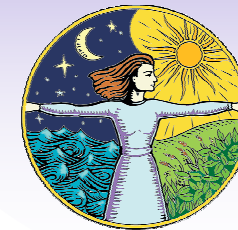


Are you a displaced homemaker, unemployed or underemployed?

The WRC offers *New Choices*, a program specifically for displaced homemakers and underemployed and unemployed adults.

*A displaced homemaker is a person who has worked in his or her own household and provided unpaid household services; **and** is unable to secure gainful employment due to a lack of required training, age, or experience; or is unemployed, or underemployed; **and** has been dependent on the income of another household member but is no longer adequately supported by that income, **or** is receiving support but is within two years of losing the support, **or** has been supported by public assistance as the parent of minor children but is no longer eligible, or is within two years of losing the eligibility.*



Women's
Resource
Center
in Alamance County

Women's Resource Center in Alamance County

411-B West Fifth Street
Burlington, NC 27215
Phone: 336-227-6900
Fax: 336-227-6993
Email: newchoices@wrcac.org
Website: www.wrcac.org



Women's
Resource
Center
in Alamance County



New Choices

Strategies for Success



New Choices - Strategies for Success

Helping people connect, cope and have hope

Our Mission

The Women's Resource Center is a non-profit organization helping women and their families improve and

enrich their personal and professional lives through education, support services, networking and community resources.



Please call 227-6900 for an initial intake to determine if you qualify for our New Choices program

New Choices provides encouragement and support to individuals during times of transition:

Family breakup

Financial downturns

Health issues

Job loss

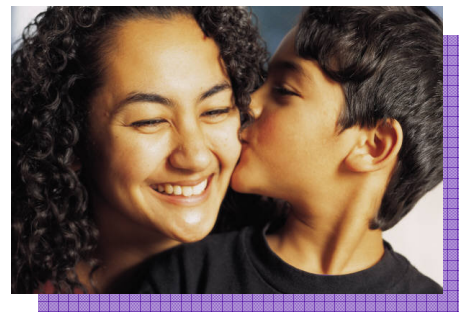
Other situations that prevent personal self-sufficiency

New Choices offers

Individual coaching

Personal planning

Specific goal setting



Free Services

Budgeting

Career Exploration

Credit Counseling

Housing Referral

Job Search Skills

Job Training

Legal Information

Financial assistance may be available for tuition assistance, books, and transportation if returning to school is approved

Limited emergency assistance may be provided as funds are available for program participants